

# Considering Cornerstone House Centre as a Community Anchor Organisation for Cumbernauld



Unique and evolving local community, geographic and demographic challenges and circumstances have been the foundation for an increasing support and evidence base for the establishment of a Community Anchor Organisation for Cumbernauld. The outline case for this, and the identified optimum positioning of social enterprise charity Cornerstone House Centre in performing this function, is explored and summarised here for consideration.

## CORNERSTONE HOUSE CENTRE: AN ESTABLISHED COMMUNITY ANCHOR

Cornerstone House Centre is a respected and experienced charity which manages a diverse range of community-focussed services and programmes, owning and operating a large multi-purpose community hub facility in the heart of Cumbernauld town centre.

Over a period of several years, it has naturally developed a niche role as an informal Community Anchor Organisation. It is neatly positioned to nurture, lead and grow Cumbernauld community connections due to its central location, modern facilities, success in delivering community projects and extensive partnership links.

### EXAMPLES OF COMMUNITY ACTIVITIES INITIATED BY CORNERSTONE HOUSE CENTRE



Whilst there are many community groups within Cumbernauld with skills in specialist or thematic fields, Cornerstone House Centre is widely recognised for its overarching, broad spectrum of many community interest developments and initiatives.

## THE CUMBERNAULD CONUNDRUM: DRIFTING COMMUNITY AND ADMINISTRATIVE OWNERSHIP

Historically, Cumbernauld presents an usual set of ownership challenges in that whilst it comes under the local authority of North Lanarkshire, it sits somewhat geographically isolated from the other five main towns and administrative centre of its Council area. Theoretically, it could be accommodated within the outskirts of one of five local authority boundaries (Glasgow, North Lanarkshire, East Dunbartonshire, Falkirk or Stirling).



As a result, it is reported that the citizens of Cumbernauld often feel separated from or on the fringes of key Community Planning processes. Its location and size present it with unique community identity and ownership issues. Arguably, it would benefit proportionately more from a dedicated Community Anchor Organisation than most other large towns in Central Scotland.

## A READY-MADE FACILITY: CORNERSTONE HOUSE VENUE

Cornerstone House as a venue is in place and ideally suited to hosting an effective Community Anchor Organisation.

- INSIDE CORNERSTONE HOUSE**
- A Large Conference Hall
  - Modern ICT and Soft Skills Suite
  - Multi-Purpose Meeting Rooms
  - Purpose-Built Office Units
  - Community Café and Kitchen

## A COMMUNITY BROKER GAP: THE NEED FOR A SUITABLE CONDUIT

Whilst there are some groups and partnerships which already perform a level of community brokerage in Cumbernauld, there are some widely acknowledged gaps and issues in this respect (examples in diagram right).

Cornerstone House Centre, with its popular town centre location, high footfall and usage by the general public and its scope to bring together existing community conduits, is ideally positioned to identify and work towards addressing such gaps in local provision.

### RECOGNISED ISSUES WITH KEY GROUPS PERFORMING LOCAL CONDUIT FUNCTIONS

**Cumbernauld and Kilsyth Local Area Partnership**  
Membership is primarily elected members with poor local citizen representation and participation

**Voluntary Action North Lanarkshire**  
Third Sector Interface activity in Cumbernauld mostly performed remotely with limited outreach

**Cumbernauld Community Forum**  
Forum resources are minimal, with membership generally low and of an older age group

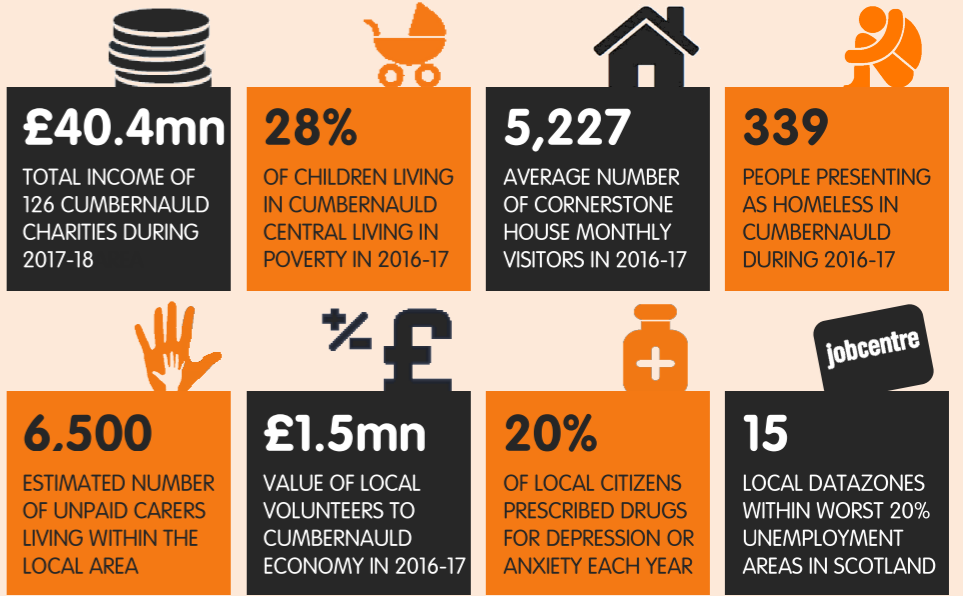
**Cumbernauld Community Learning and Development Partnership**  
Inconsistent membership and meeting patterns in recent years

## LOCAL AREA AND COMMUNITY CONTEXT: KEY DEMOGRAPHIC INFORMATION AND STATISTICS

Cumbernauld has a population of **50,920** (North Lanarkshire Council Key Facts 2017), making it the most populated of six main townships in the local authority area. The wider Cumbernauld and Kilsyth area has a population of **64,107** (National Records of Scotland 2016), of which 64% are aged 16-64 years-old.

Statistics relating to the town incorporated within the Scottish Index of Multiple Deprivation 2016 point towards a number of social, health, employability, crime, poverty and housing issues in Cumbernauld. The areas with the most notable deprivation levels are Abronhill, Cumbernauld Central, Seafar and Westfield.

### SAMPLE OF CUMBERNAULD DEMOGRAPHICS AND KEY COMMUNITY STATISTICS



## COLLABORATIVE WORKING FOR COMMUNITY BENEFIT: MAXIMISING EXCELLENT CORNERSTONE HOUSE CENTRE PARTNERSHIP LINKS

It is recognised that for a Cumbernauld Community Anchor Organisation to succeed, the appointed agency requires to have excellent partnership links.

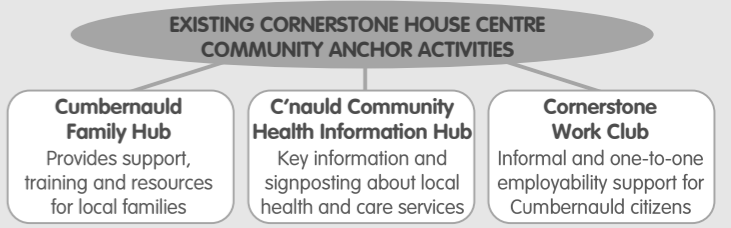
Cornerstone House Centre has robust established links to a wide and diverse range of public, third and private sector organisations and partnerships, as illustrated in the adjacent graphic. It is anticipated that many of these agencies would form the basis of a Community Anchor Advisory or Reference Group.

### EXAMPLES OF EXISTING CORNERSTONE HOUSE CENTRE PARTNERS

North Lanarkshire Council	NHS Lanarkshire	Health and Social Care North Lanarkshire
Police Scotland	North Lanarkshire Leisure	Routes to Work
Cumbernauld and Kilsyth Citizens Advice Bureau	Cumbernauld and Kilsyth Unemployed Workers	Cumbernauld YMCA-YWCA
One Parent Families Scotland	Voluntary Action North Lanarkshire	Cumbernauld Community Forum

## JOINING THE EXISTING DOTS: ALIGNING WITH CURRENT PROVISION

Cornerstone House Centre already operates a number of activities under specific thematic areas which align with the role of a Community Anchor Organisation, as outlined below.



## FOR FURTHER INFORMATION: CONTACT CORNERSTONE HOUSE

Enquiries in relation to Cornerstone House Centre's proposal to be a Community Anchor Organisation can be directed to:

**Cornerstone House Centre** Charity No: SC041782 | Company No: SC383997  
**1 Esk Walk, Town Centre, Cumbernauld, G67 1BZ**  
**T: 01236 739220 | E: admin@cornerstone-house.org.uk**